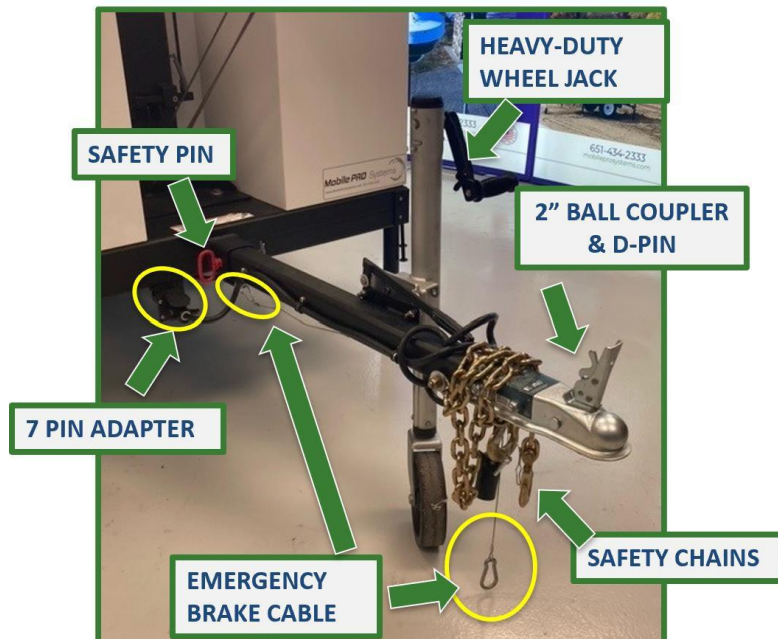


## 3400 Trailer Hitching and Unhitching Steps

### Steps for connection of the Tongue Assembly to the Trailer & Hitching the Tongue Assembly to the Tow Vehicle

**Step 1:** If the Tongue Assembly has been removed, ensure Safety Pin is inserted with Cotter Pin, Emergency Brake Cable clipped on the ring below the Safety Pin underneath the Tongue, 7-Pin is plugged in along with Heavy-Duty Wheel Jack down.



**Step 2:** Using the Crank Handle on the Heavy-Duty Wheel Jack latch the 2" Ball Coupler to the 2" Ball Hitch (insert D-Pin once secured to the hitch), connect Safety Chains and Emergency Brake Cable on one of the Safety Chain's connection points.



## 3400 Trailer Hitching and Unhitching Steps Continued

**Step 3:** Once the trailer is hitched, swivel up the Heavy-Duty Wheel Jack to the stowed position and use the clip feature on the Crank Handle to lock the Crank Handle in place.



### Steps for unhitching and disconnecting the Tongue Assembly from the Tow Vehicle

**Step 1:** When at the deployment site, Chalk the Wheels, using the provided Wheel Chalk in the Storage Bin.

**Step 2:** Disconnect the Safety Chains, Emergency Brake Cable, 7-Pin Adapter, Trailer Hitch Pin, then operate the Crank Handle on the Heavy-Duty Wheel Jack to raise off the 2" Ball. Move the tow vehicle.



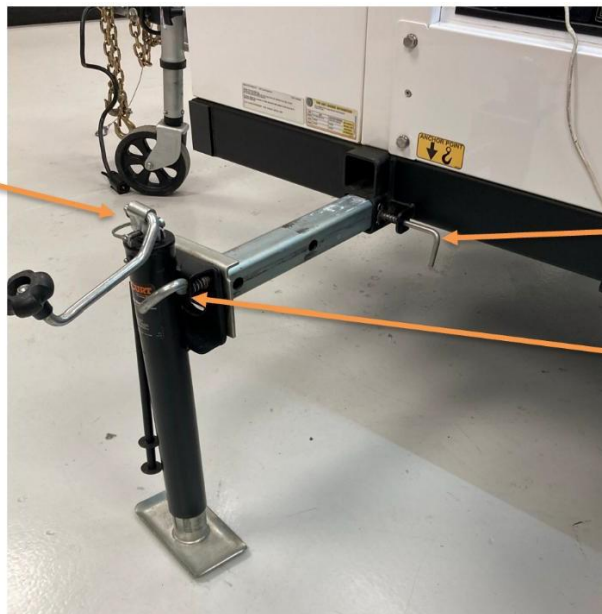
## 3400 Trailer Leveling Steps

**Step 1:** Leveling out the trailer using Crank Handle on the Heavy-Duty Wheel Jack.



Cross Levels are at the front and back of the trailer. Ensure trailer is level using the front wheel jack, it will speed up the process vs going around to each outrigger to level the trailer. The outriggers will assist in leveling out the trailer as well.

**Step 2:** Deploy all (4) four Outriggers (two on both sides of the trailer). The Outriggers are intended to support the trailer, not intended to lift the wheels off the ground. Once all (4) four Outriggers are deployed and the trailer is level, remove the Crank Handles and put them in the Storage Bin.



Removable Crank Handle and D-Pin

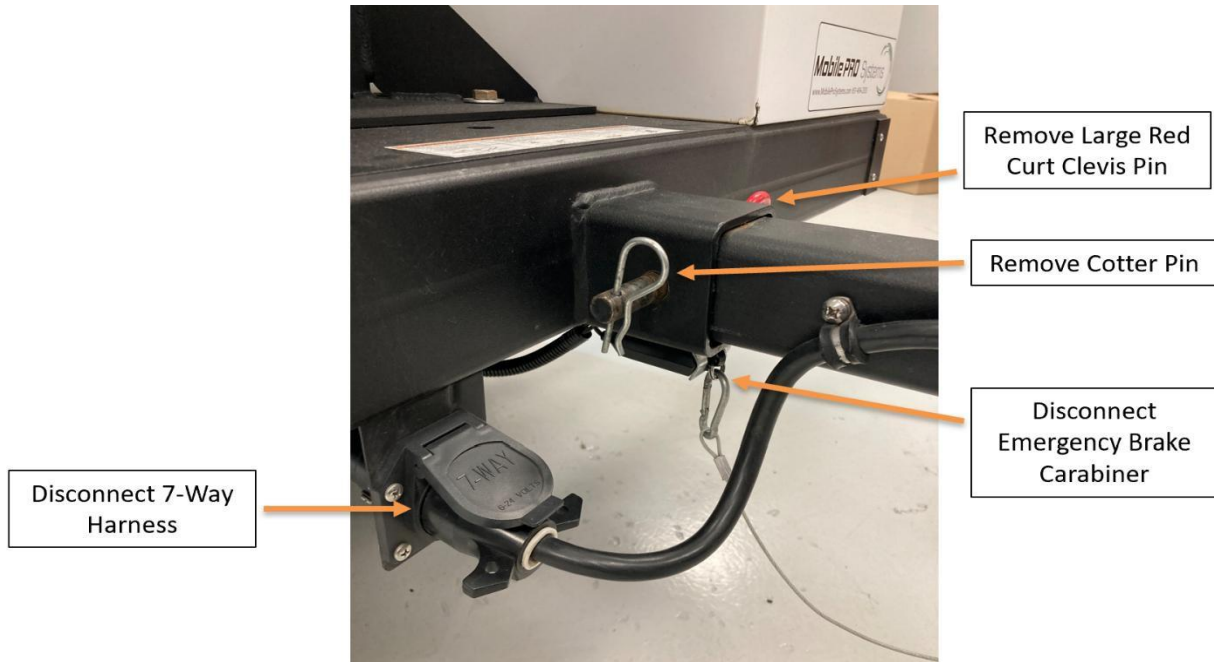
Spring Lock L-Pin to extend each outrigger

Swivel Pin to pivot each outrigger down



## Removing the Tongue Assembly

**Step 1:** Disconnect functions and remove the Tongue Assembly (reinsert the Large Red Pin and Cotter Pin into the Removed Tongue holes) and then remove the Outrigger Handles by removing the D-Pins.



**Tip:** you may need to operate the Crank Handle on the Heavy-Duty Jack to remove the Tongue Assembly



## Powering on the Trailer

**Step 1:** Power on the Power Control Module (PCM) – Hold Up on the System Power Toggle Switch.

The touch screen display will power on. Once turned on for 10-15min the square in the top right corner will turn from Red to Green. That confirms the trailer's modem (Cradlepoint) and our MiniRem device has power and is also communicating to our MPStatus Dashboard.



**Step 2:** Switch the Toggle Switch on the Generator Control from Disable (down) to Monitoring Voltage (middle - shown in the picture above).

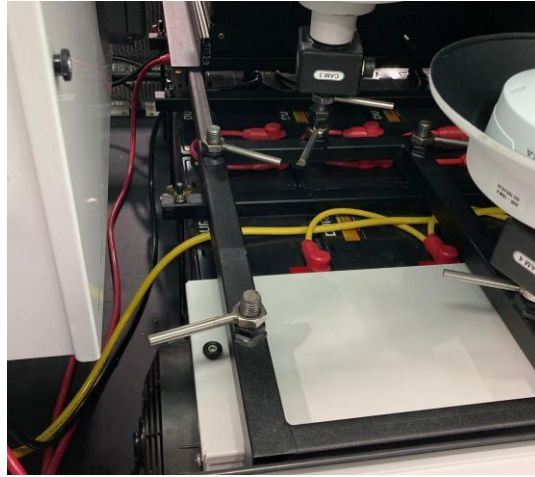
### IMPORTANT:

- Holding the Generator Control Toggle Switch Up will manually start the diesel generator.
- The Breaker Switches at the bottom of the PCM (2 Red, 4 White) are only to be switched off if you are putting the trailer in storage and have no way to plug in the trailer. Otherwise, always keep them on.

## Camera Installation on the T-Bar

**Step 1:** Grab Camera Cable Bag from the Storage Bin.

**Step 2:** Remove Camera from the Camera Storage Rack Area (loosen locknut and twist camera off the threaded mounting studs).



**Step 3:** Identify camera mounting location. Each camera has specific labels on the Camera Mount along with the corresponding T-Bar Mounting Position. (CAM 1 & CAM 2)



## Camera Installation on the T-Bar Continued

**Step 4:** On the T-Bar Mounting Location Turn the camera clockwise onto the Threaded Mounting Stud until it bottoms out, then turn counterclockwise so the Bulkhead on the Camera Mount and the Bulkhead on the Top Mast Box are facing. Then securely tighten the locknut counterclockwise against the Camera Mount.

**Step 5:** Connect the labeled Ethernet Cables to their corresponding Bulkhead Connectors on the Top Mast Box and Camera Mount.



**Step 6:** Secure the Ethernet Cables with the Retention Pig Tails mounted on the T-Bar. This is a critical step, so Ethernet Cables do not get snagged between the Mast Coil Rests.  
(see picture above)



**\*\*\*REPEAT STEPS 1-6 FOR THE ADDITIONAL CAM 2 & REVERSE THESE STEPS TO REMOVE CAMERAS FROM THE T-BAR AND SECURE IN CAMERA STORAGE AREA\*\*\***

## Raising the Mast

**Step 1:** Before raising the Mast, login into the laptop and ensure you have live video streaming on your VMS.

**Step 2:** Remove Mast Safety Pin



Remove Cotter Pin



Stow Mast Pin

**Step 3:** Inside the driver's side door (left side), operate the Tilt switch Up to lift the Mast from the stowed position. Then operate the Extend switch Up to raise the Mast. Both functions will have automatic sensors to lock the Mast in place. Then double check your VMS.



## Deploying Solar Panels

**Step 1:** Remove all (3) Solar Pins – Front, Back, and Passenger Side.

**Step 2:** Loosen rear thumb screw and slide the Support Tube out and tighten thumb screw.

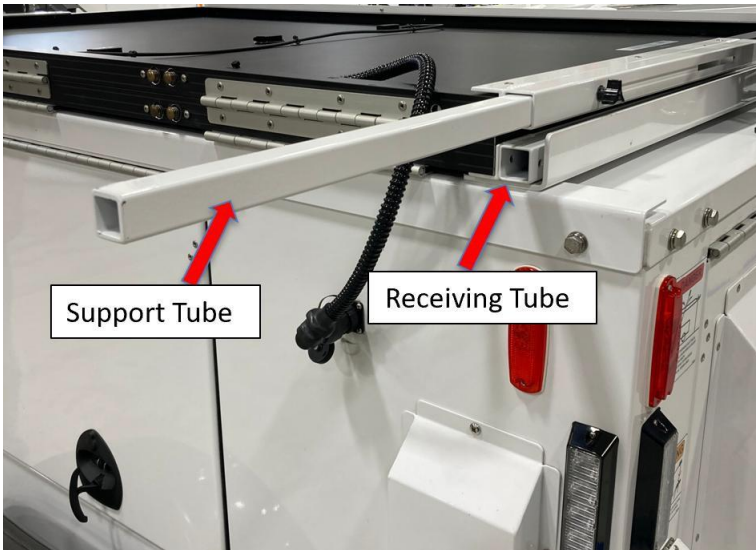


**Step 3:** Use the Support Tube as leverage to lift the top Solar Panel up and over so eventually the panels create one uniformed flat surface.



## Deploying Solar Panels Continued

**Step 4:** Once the top panel is vertical, loosen same thumb screw so you can align the panels and slide the Support Tube into the Receiving Tube creating the one uniform flat surface then slide and tighten the thumb screw. Repeat this process on the other side of the panel.



**Step 5:** Use the front and back Solar Pins to lock in the Solar Brackets in the front and rear.



## 3400 Commander trailer has now been safely deployed.

**Final Step:** Lock the doors.

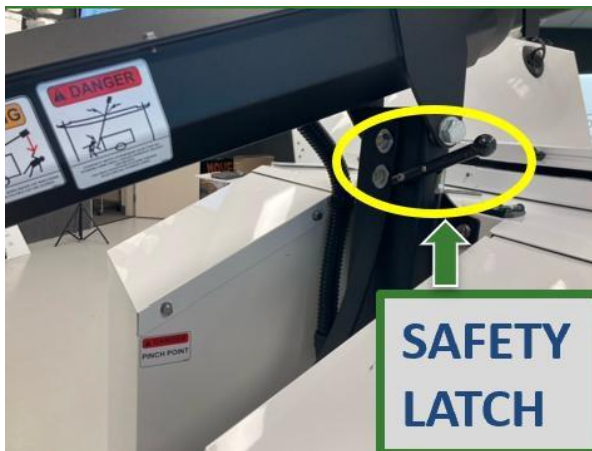


## Lowering the Mast & Takedown Steps

**Step 1:** Make sure the Solar Panels are back in the stowed position on top of the trailer and the (3) three Solar Pins are inserted in the front, back, and passenger side.

**Step 2:** Operate the Extend Toggle Switch down to Lower the Mast from its tallest point.

**Step 3:** Simultaneously hold down the Mast Safety Latch and the Tilt Toggle Switch down to bring the Mast down to the stowed position. You only need to hold the Safety Latch down for (3) three seconds then you can let go.



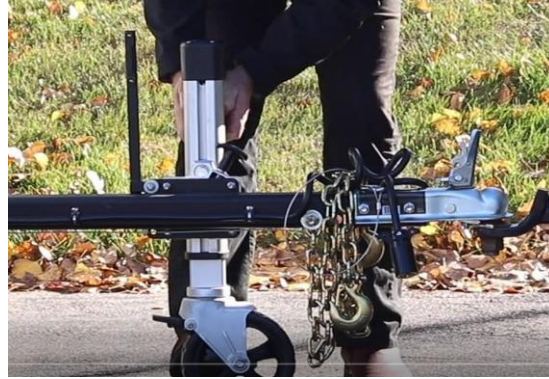
**Step 4:** Insert Mast Safety Pin & Cotter Pin.



**Step 5:** Disconnect Camera Ethernet Cables (store in Storage Bin), remove Cameras from the T-Bar and secure the Cameras back in the Camera Storage Rack Area on the threaded mounting studs and tighten down with the locknuts.

## Lowering the Mast & Takedown Steps Continued

**Step 6:** Insert and connect the Tongue Assembly to the trailer if it is removed. \*\*\*Lower Heavy-Duty Front Wheel Jack on the ground\*\*\*



**Step 7:** Turn the PCM into Hibernate Mode – single toggle down on the System Power switch.

**Step 8:** Disable the Generator Control – Flip the toggle switch down.



**Step 9:** Put the Wheel Chalk in the Storage Bin and attach Outrigger Crank Handles to swivel up the Outriggers.

**Step 10:** Hitch the trailer to the tow vehicle.



**Step 11:** Lock the doors.